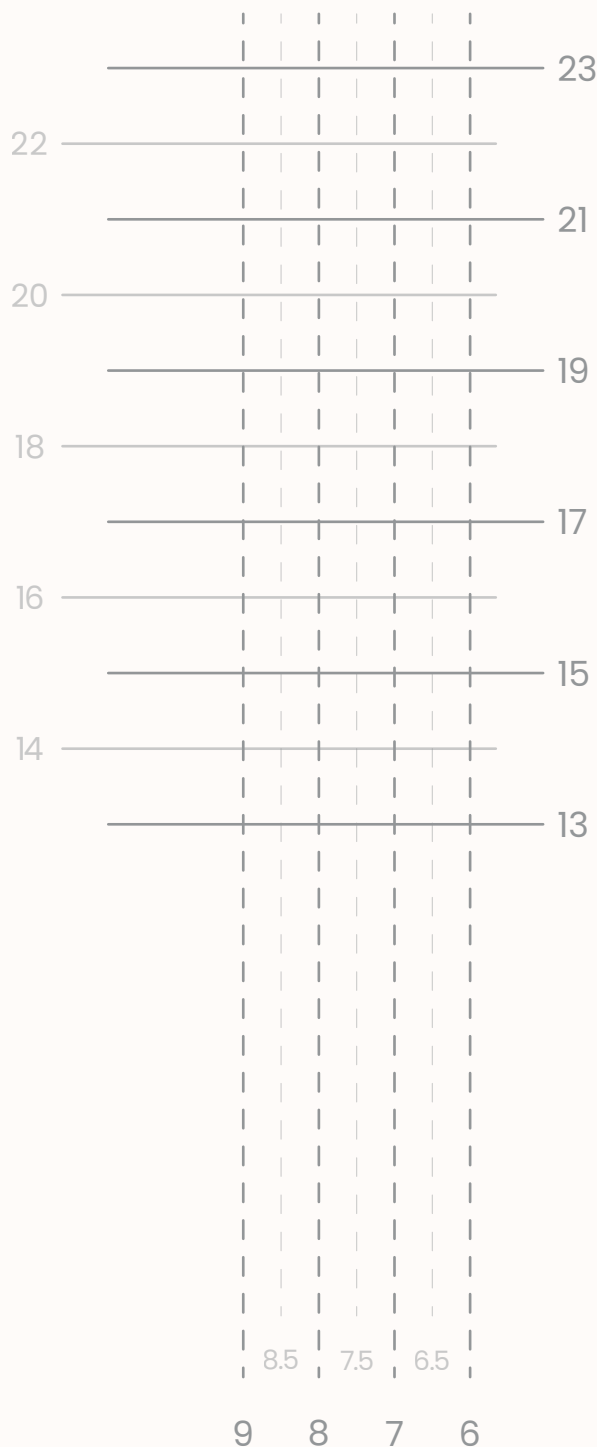




KUIDAS KASUTADA?

1. Prindi leht (kasuta kindlasti seadet "Actual Size" tõlkes "Sobita paberilehele")
2. Kontrolli, et trükise mõõdud oleksid korrektsed (vt sektsiooni "Prindikontroll" - pangakaart ja 2 eurone münt peaksid mahtuma täpselt joonte vahele)
3. Aseta lapse jalg paberile ja tõmba pastakaga kriips jala laiemas ja pikimas asukohas. (Lubadused eelseisvast jäätiseöömisesest võivad aidata protsessi kiirendada)
4. Korda teise jalaga.



KÜLG PABERI LEHE ÄÄRE VASTU

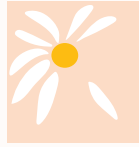
VASAK JALG

PAREM JALG

PRINDIKONTROLL:



KAND
LÄHEB SIIA



CHECK YOUR CHILD'S FOOT SIZE

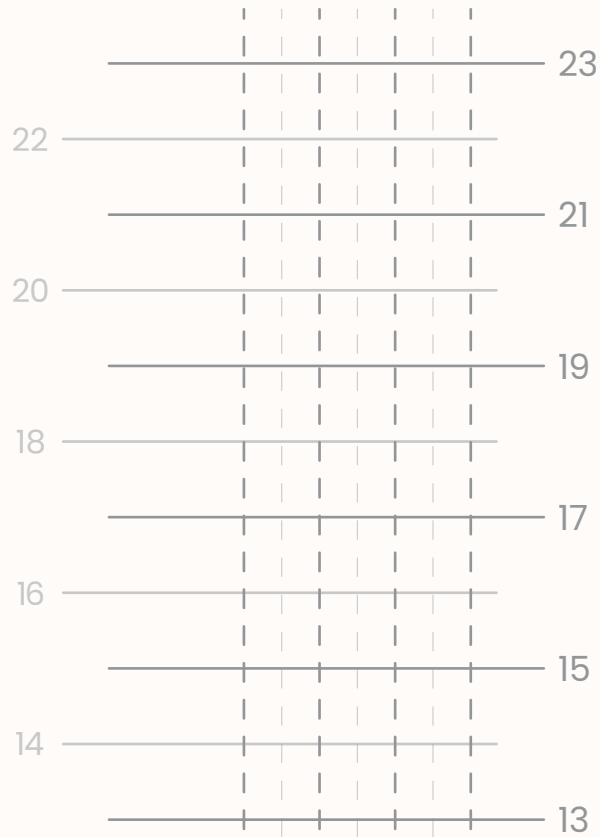
HOW TO USE?

Print the page (be sure to use the "Fit to area" setting).

Check that the dimensions of the print are correct (see the section "Print control" - a bank card and a 2-euro coin should fit exactly between the lines).

Place the child's foot on the paper and draw a line with a pen in the widest and longest position. (Promises of upcoming ice cream can help speed up the process 😊).

Repeat with the other leg.



SIDE GOES HERE

LEFT FOOT

RIGHT FOOT

PRINT ACCURACY CHECK:



8.5 7.5 6.5
9 8 7 6

HEEL
GOES HERE